



Website: www.cananz.org.nz

PO BOX 564
SHORTLAND ST.
AUCKLAND
NEW ZEALAND

Email: info@cananz.org.nz



The committee and I would like to wish all our members and friends a great Xmas and fair sailing in the coming year and we will see you at our last meeting of the year for a night of fun and frivolity

Yours

BOB McDAVITT



AT THE RICMOND CRUISING CLUB ROOMS

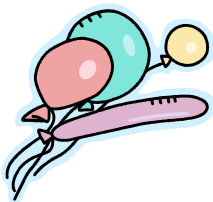
1930hrs

12th DECEMBER 2011

Please bring a plate for potluck supper

An informal night with lighthearted mind games, Bob's weather corner, and a few suggestions for cruising galley delights, all this and great company and yarns.

SEE YOU THERE



MATES?



John decided to go skiing with his buddy Keith, so they loaded up John's minivan and headed north.

After driving for a few hours, they got caught in a terrible blizzard, so they pulled into a nearby farm and asked the attractive lady who answered the door if they could spend the night.

I realize its terrible weather out there and I have this huge house all to myself, but I'm recently widowed,' she explained. 'I'm afraid the neighbours will talk if I let you stay in my

house.' 'Don't worry,' John said. 'We'll be happy to sleep in the barn.

And if the weather breaks, we'll be gone at first light.'

The lady agreed, and the two men found their way to the barn and settled in for the night.

Come morning, the weather had cleared, and they got on their way.

They enjoyed a great weekend of skiing.

But about nine months later, John got an unexpected letter from an attorney.

It took him a few minutes to figure it out, but he finally determined that it was from the attorney of that attractive widow he had met on the ski weekend.

He dropped in on his friend Keith and asked, 'Keith, do you remember that good-looking widow from the farm we stayed at on our ski holiday up north about 9 months ago?' 'Yes, I do.' Said Keith.

'Did you, er, happen to get up in the middle of the night, go up to the house and pay her a visit?' 'Well, um, yes!,' Keith said, a little embarrassed about being found out, 'I have to admit that I did.'

'And did you happen to give her my name instead of telling her your name?' Keith's face turned beet red and he said, 'Yeah, look, I'm sorry, buddy . I'm afraid I did.' 'Why do you ask?'



'She just died and left me everything.'



Editors Crn (with frank)

MerryXmas All.

The end of the year is in sight and the last Association meeting for the year 2011 is upon us, so if you and your friends would like a relaxed and laid back night of socializing, swapping yarns, and participating in the light hearted mind games come along, the company is great.

Congratulations are in order for Bob McDavitt our President.

Friday the 4th November at the **YACHTING NZ** Annual dinner Bob was **HONOURED with COACH/OFFICIAL OF THE YEAR 2011.**

well earned Bob. Congratulations from us all,

The Kowhai Cruise was shortened because of the timetables of most of the members; remember the world cup finale was on that weekend.

But this did not detract from the enjoyment had by the attending members. A fun weekend, which proves cruisers enjoy the company no matter what or where.

The Association open day on X pier went well with members boats; Tony's *Ttaranui III*, Trish's *Wishborne*, Grant's, *Delia*, Basils *Pink cadillac*, and Grants *Southern Spirit* on show, with Grant

offering quick joy rides on his boat. Sadly nobody took up his offer. Still a vote of thanks must go to the skippers all. There was a \$40.00 Burnsco gift voucher raffle prize and a sausage sizzle,

A steady flow of interested people arrived to inspect the boats . It must be mentioned here that there was one small hitch with the sausage sizzle.

One of the committee who will remain nameless turned into a latent pyrotechnic and sacrificed a batch of sausages to an undisclosed god much to the dismay of the head chef. The perpetrator was last seen scrubbing the decks of head chef's boat (only kidding)

The only other hitch was our leader Basil Orr lost his Aussie hat overboard (thought it was part of his head and growing) so anybody finding a hat floating in the harbour without a head please return same to the club

The New Year "**SUMMER CRUISE**" will be held on 18th Febuary2012, to Mahurangi, where the **Maggi Trophy** will be competed for, so mark it up.

A very merry Xmas and may you have fair winds and kind sea's in the coming year



Auckland Anniversary Day Regatta

Monday 30 January 2012

The Organising Authority is the Auckland Anniversary Regatta Inc.
PO Box 69043, Auckland 0645
P: 0800-REGATTA admin@regatta.org.nz F: 09 836 4015

Notice of Race

1.0

RULES

1.1

The Regatta will be governed by the rules as defined in The Racing Rules of Sailing 2009-2012.

1.2

The race will be governed by:

- this Notice of Race (except as changed by the Sailing Instructions)
- the Sailing Instructions

1.3

The YNZ Safety Regulations Part I shall apply to un-ballasted centerboard boats, open boats and sailboards.

1.4

The YNZ Safety Regulations Part II Category 5 shall apply to keelboats and multihull boats with the exception of the Passage Races where Cat 4 shall apply to keelboats and multihull boats.

1.5

The YNZ Safety Regulations Part V Category C shall apply to trailer yachts.

1.6

The YNZ Sports Boat Regulations shall apply to sports boats.

1.7

Racing Rules of Auckland Dragon Boating shall apply to Dragon Boats

1.8

The NKOA New Zealand Rules for Waka Ama racing shall apply to Waka Ama canoes

2.0

ADVERTISING

2.1

Boats may be required to display advertising chosen and supplied by the organising authority

3.0

ELIGIBILITY AND ENTRY

3.1

The regatta is open to boats that comply with Clause 1.0 of the NOR

3.2

The entry fees are as follows:

3.2.1 Keelboats and Multihulls over 6m, Trailer yachts, Tug & Tow Boats,

Dragon Boats and Waka ama canoes \$25.00 incl GST

3.2.2 Harbour Blast entrants

\$25.00 incl GST

3.2.3 Centreboard classes & other boats under 6m \$15.00 incl GST

3.2.4 Electron, International One Metre, Nautic 12 Radio Controlled Yachts \$15.00 incl GST

3.3

Entries under 3.2.1 will close at 1600 hours on Monday 23 January 2012, be completed on a signed Entry Form accompanied by the entry fee, and sent to AAR, PO Box 69043, Glendene,

Auckland 0645, post marked no later than Monday 23 January 2012, or emailed or faxed. Entry Forms Harbour Blast - Orakei Wharf will accompany the Sailing Instructions and be available by 1 December 2011.

3.4

Late Entries under 3.2.1 accompanied by an additional late entry fee of \$10.00 may be accepted at the Regatta Committee's discretion until 1700hrs on Thursday 26 January 2012.

3.5

Entries under 3.2.2, 3.2.3 and 3.2.4 may be sent in accordance with 3.2.1 or completed and accepted at the applicable venue on the day of the Regatta. Entries will close 60 minutes prior to the warning signal for the first race. Late entries will not be accepted.

3.6

Measurement certificates should be available if requested.

3.7

Passage Races are open to keelboats and trailer yachts that either tow a dinghy or have a dinghy on the deck or across the transom. Inflatable dinghies must be inflated.

3.8

Keelboats may use extras except for those competing in Passage Races M1, M2 and R1.

4.0

SCHEDULE OF EVENTS

4.1

Tugboat Race

Event TW Warning Signal

Includes Tug and Tow Boats

4.2

Auckland to Mahurangi Passage Race

Event OM Warning Signal

4.3

Waitemata Harbour Races

Event W1 Warning Signal

Event W2 Warning Signal

0950 hrs

1055 hrs - Classic yachts, Keelboats

1100hrs - Multihulls

1105 hrs - Division 5 (Up to 8m)

Includes 727; J24; Pied Piper; Raven 26; Tracker; Soling, Hartley 16's

Event W3 Warning Signal 1110 hrs - Division 4 (8 - 9.5m)

Includes Raven 31; Farr 920; Cavalier 32; Davidson 28; Marauder; Lotus 9.2; Young 88;

Ross 930

Event W4 Warning Signal 1115 hrs - Division 3 (9.5 - 11m)

Includes Farr 1020; MRX; Stewart 34

Event W5 Warning Signal 1120 hrs - Division 2 (11 - 12.19m)

Includes Elliot 1050; Young 11; Farr 11.6; Elliott 12; Farr 1104

Event W6 Warning Signal 1125 hrs - Division 1 (12.19m and over)

Event W7 Warning Signal 1130 hrs - A Classic & A Modern Divisions

Event W8 Warning Signal 1140 hrs – B Classic & B Modern Divisions

4.4

Includes Multihulls, High Performance Dinghies, Flying Fifteens, M Class, Elliott 5.9, 49ers and any similar designs

Event HB1 Warning Signal 1155 hrs

Event HB2 Warning Signal 1200 hrs

4.5 Dragon Boat Racing – Viaduct Harbour

Event D1 Briefing: 0930hrs

4.6 Waka ama Canoes – Westhaven Tower

Event C1 Registration 1100hrs

4.7

Rakino Island to Auckland Race

Event R1 Warning Signal

Event R2 Warning Signal

4.10

Centreboard Races: Waitemata Harbour

Kohimarama Yacht Club

Optimist Green; Optimist Open; P Class; Starling;

Arrow; NS14; 420; Splash: 29er; RS:X;

Techno 293 Boards

Briefing: 1000 hrs, warning signal Race 1- 1055 hrs

Maraetai Sailing Club - Starling

Saturday 28th Jan: Registration 0800hrs Briefing

0930hrs warning signal Race 1 -1055

Sunday 29th Jan: Warning signal Race 1 – 0955hrs

Monday 30th Jan: Warning signal Race 1 – 0955hrs

Narrowneck Beach – Sea Scout Cutters

Registration: 0845hrs Briefing: 0900hrs Event Start: 0945hrs

Northcote-Birkenhead Yacht Club

Idle Along; Navy Crown; Y W Heron; X3; Optimist Green; 2.4 mR; Access Liberty; Jolly Boats

Briefing: 1000 hrs, warning signal Race 1- 1055 hrs

Tamaki Yacht Club

Laser; Laser Radial; Laser 4.7; Mistral; Phase II

Briefing: 1130 hrs, warning signal Race 1- 1230 hrs

Wakatere Boating Club

Sunburst; Hobie 16

Briefing: 0915hrs, warning signal race 1 – 0955hrs

4.11

Radio Controlled Yachts

Electron Class -Westhaven Marina (Marine Industries Association Pontoon)

Briefing: 0930 hrs, warning signal Race 1 – 0958 hrs

4.12

International One Metre -Wattle Downs, Manurewa

Briefing: 0930 hrs, Race 1- 1000 hrs

4.13

Event W9 Warning Signal 1150 hrs – Tall Ships and Waka

Race 1 – 1000hrs

Race Start 1200hrs

0955 hrs – Keelboats no extras includes Farr 1020's, Trailer yachts

1000 hrs – Reactor 25

4.8 Mahurangi to Orakei Wharf H28's Passage Race

Event H1 Warning Signal 0855 hrs – H28's

4.9 Mahurangi to Auckland Passage Race

Event M1 Warning Signal 0900 hrs – Up to 26'

Keelboats no extras

includes Trackers

Event M2 Warning Signal

Event M3 Warning Signal

0905 hrs – Over 26' Keelboats no extras

0910 hrs – Over 26' Keelboa

Nautic 12 Class -Wattle Downs, Manurewa

Briefing: 0930 hrs, Race 1- 1000 hrs

5.0

SAILING INSTRUCTIONS

The Sailing Instructions for Events 4.1, 4.2, 4.3, 4.6, 4.7, 4.8 and 4.9 will be issued on the website www.regatta.org.nz and to clubs, classes and individuals no later than 1600 hours on Monday 16 January 2012. Sailing Instructions and Entry Forms for Event 4.4, 4.5, 4.10, 4.11,

4.12 and 4.13 will be available at the applicable venue on the day of the Regatta.

6.0

RACING AREA

The race areas will be the Hauraki Gulf, Waitemata and Viaduct Harbours, Westhaven and Wattle Farm Manurewa

7.0

COURSES TO BE SAILED

The courses will be described in the Sailing Instructions applicable to the respective venues

8.0

SCORING

8.1

The Low Points Scoring System of Appendix A will apply.

8.2

Handicaps will be set by the AAR with assistance from Clubs, Class Associations and YNZ.

8.3

No score will be excluded.

9.0

ALTERNATIVE PENALTIES

Appendix P may apply.

10.0

PRIZES

Prizes and trophies will be presented at the Official Prizegiving, Sunday 7 March 2012.

Venue: Auckland Town Hall

REMEMBER

THIS



PREVENTS

THIS



At the Yachting Association Annual Dinner 4th November our President Bob McDavitt was honoured with COACH/OFFICIAL OF YEAR 2011.

A well-deserved honour for Bob after years of hard work and service as President of cananz and weather adviser to offshore cruisers, racers and the Boating fraternity in general. *Congratulations Bob*

Temporary and Preliminary Notices to Mariners Affecting Chart NZ 23

Year NM Title

- 2006 [176](#) NEW ZEALAND - North Island - East Coast - Cape Kidnappers Eastwards - Scientific Instruments.
2011 [123](#) NEW ZEALAND - North Island - West Coast - Cape Egmont Southwestwards - Drilling Operations.
2011 [226](#) NEW ZEALAND - North Island - East Coast - Gisborne, Northeastwards - Scientific Instrument.
2011 [240](#) NEW ZEALAND - North Island - West Coast - Tasman Sea - Seismic Survey.

List of Permanent Notices to Mariners Affecting Chart NZ 23

2005 [088](#) [124](#) [163](#) 2006 [023](#) [032](#) 2007 [026](#) [094](#) [104](#) [131](#) [180](#) 2008 [031](#) [134](#) [249](#) 2009 [043](#) [199](#) 2011 [216](#)

SKELETON CREW

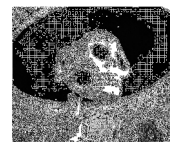


While cruising near the coastline off Punta Arenas, Chile, the British sailing ship Johnson sighted what appeared to be a boat with sails floating in the wind. When British signals elicited no response, the craft was approached. The crew noticed that the ship's masts and sails were covered with some kind of green moss, and that the vessel seemed abandoned by its crew.

Upon boarding it, the skeleton of a man was discovered beneath the helm. The deck was decayed to such an extent, that it gave under the footsteps. Three more skeletons were found near a panel, ten were found in the crew's quarters, and six on the bridge.

Upon the ravaged prow of the vessel, the words, *Marlborough Glasgow*, could still be discerned. The Marlborough left Littleton, N.Z. in January 1890 with a cargo of wool and frozen mutton, and a crew of 23 men under Captain Hird. In April 1890 an unsuccessful search for the vessel was made. Nothing was ever found of them until 1913.

Taken from the Wellington, New Zealand Evening Post November 13, 1913 and Agence Havas





No hat



**NOVEMBER 2011
WAS A SUCCESSFUL
OPEN DAY ON X PIER**